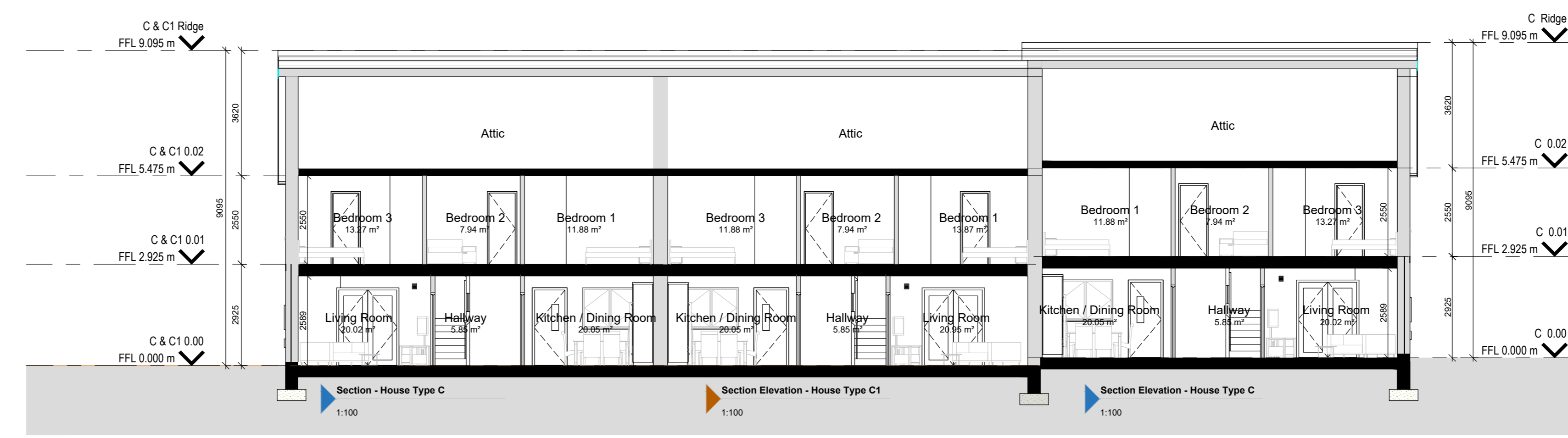
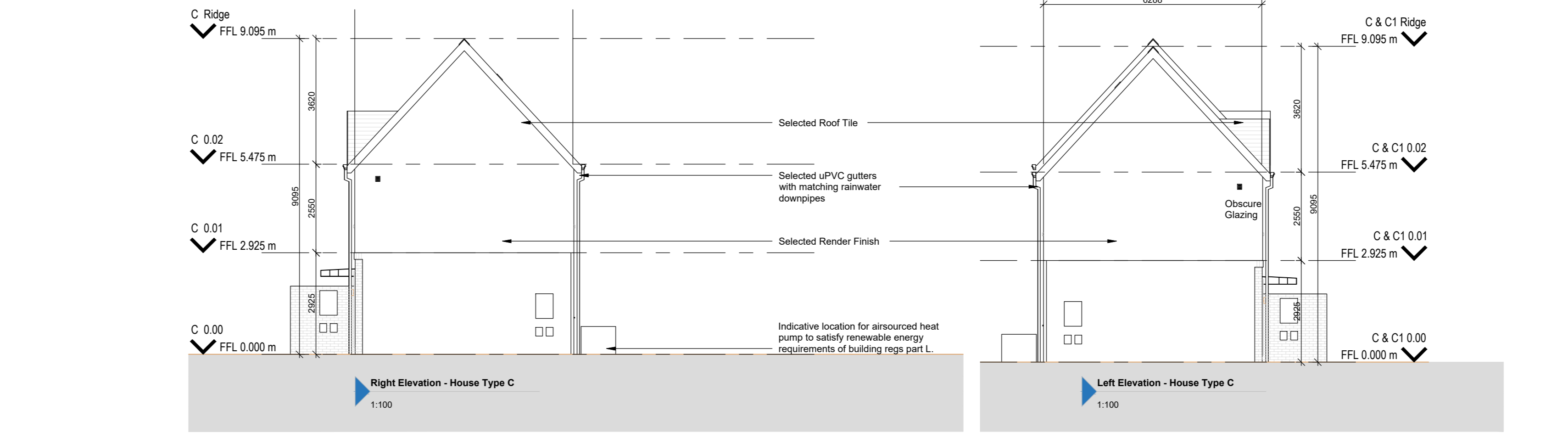
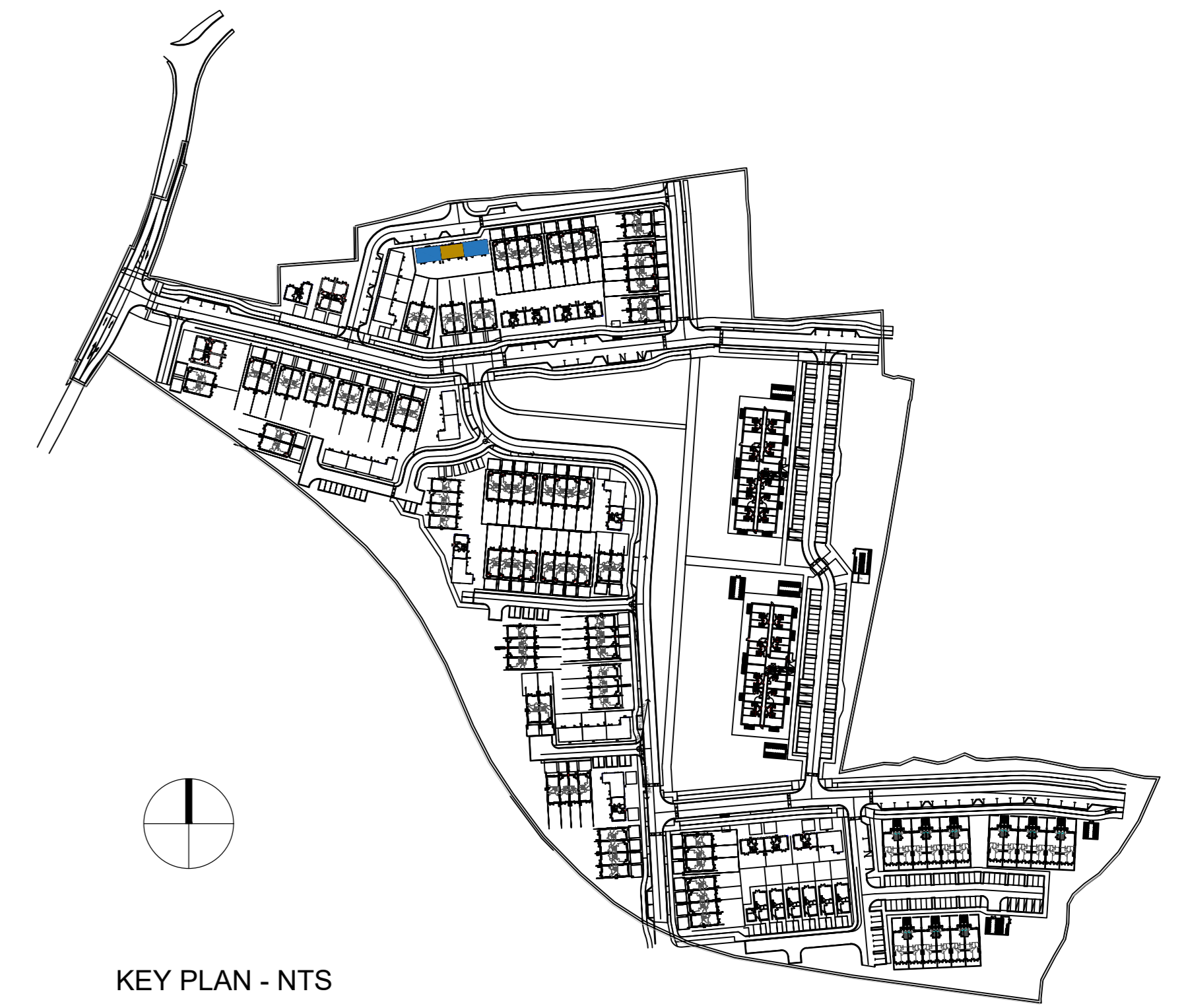


3D - HOUSE TYPE C & C1 & C (NTS - for information)



C Room Schedule	
Name	Area
Kitchen / Dining Room	20.05 m ²
Utility	2.98 m ²
Living Room	20.02 m ²
WC	2.55 m ²
Hallway	5.85 m ²
Store	0.96 m ²
Bedroom 3	13.27 m ²
Ensuite	3.59 m ²
Bedroom 1	11.88 m ²
Bathroom	6.35 m ²
Bedroom 2	7.94 m ²
Landing	9.10 m ²
Store	1.81 m ²
Aggregate Living Area	40.07m ²
Ground Floor GIFA	57.17m ²
Aggregate Bed Area	33.09m ²
First Floor GIFA	57.17m ²
Attic Storage	2.8m ²
Total Storage	8.55m ²
Total Floor Area =	114.342m²

C1 Room Schedule	
Name	Area
Kitchen / Dining Room	20.05 m ²
Utility	3.03 m ²
Living Room	20.95 m ²
Hallway	5.85 m ²
Store	0.96 m ²
WC	2.55 m ²
Bathroom	6.35 m ²
Bedroom 3	11.88 m ²
Bedroom 2	7.94 m ²
Landing	9.10 m ²
Store	1.81 m ²
Ensuite	3.91 m ²
Bedroom 1	13.87 m ²
Aggregate Living Area	41m ²
Ground Floor GIFA	57.98m ²
Aggregate Bed Area	33.69m ²
First Floor GIFA	57.98m ²
Attic Storage	2.8m ²
Total Storage	7.97m ²
Total Floor Area =	115.96m²



NOTES / LEGEND
- FOR NORTH POINT AND LEVELS PLEASE REFER TO SITE LAYOUT PLAN

North Point

Rev:	Date:	Description:	By:	Drawing Status:
01	10/06/2022	ISSUED FOR PLANNING	NN	PLANNING

Client: CAIRN HOMES PROPERTIES LIMITED
 Project: Newcastle South
 Drawing: House Type C & C1 & C Terraced Units
 Date: 02/06/2022 Scale: As Indicated @ A0
 Drawing No: NSC21-MOLA - PX - ZZ - DR - A - XX - 0416 - P
 Scale: 20023
 Revision: 01

© COPYRIGHT This drawing or design may not be reproduced without permission.

